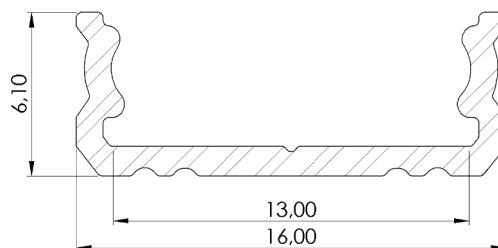
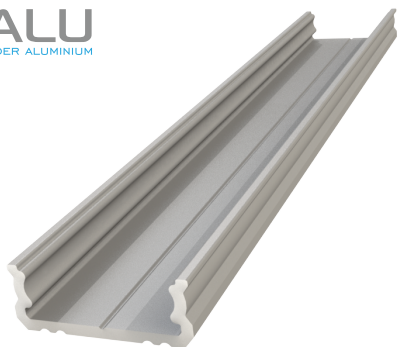


ALU

licht
professional led profiles



powered by



dimensions in millimetres

FLAT SURFACE LED PROFILE

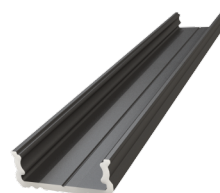
GLS1

The most important features:

- excellent heat dissipation
- designed and manufactured in Poland
- cover made of polycarbonate – UV & heat resistant

Application:

- home and shop furniture assembly
- stairs assembly
- wall and ceiling lighting decorations



Specifications

Available colours	silver, white, black
Material	anodized aluminium
Application	surface tiles
LED strip width	up to 12 mm
Basic length	2020 mm
Additional lengths	1000 mm, 3000 mm, 4150 mm

LED Surface Profile GLS1

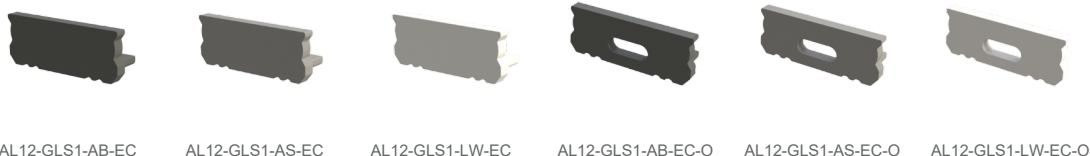
Product code	Description of the product						
AL12-GLS1-AS-1000	Anodized silver 1000mm	AL12-GLS1-AB-1000	Anodized black 1000mm	AL12-GLS1-LW-1000	Lacquered white 1000mm	AL12-GLS1-RW-1000	Raw 1000mm
AL12-GLS1-AS-2020	Anodized silver 2020mm	AL12-GLS1-AB-2020	Anodized black 2020mm	AL12-GLS1-LW-2020	Lacquered white 2020mm	AL12-GLS1-RW-2020	Raw 2020mm
AL12-GLS1-AS-3000	Anodized silver 3000mm	AL12-GLS1-AB-3000	Anodized black 3000mm	AL12-GLS1-LW-3000	Lacquered white 3000mm	AL12-GLS1-RW-3000	Raw 3000mm
AL12-GLS1-AS-4150	Anodized silver 4150mm	AL12-GLS1-AB-4150	Anodized black 4150mm	AL12-GLS1-LW-4150	Lacquered white 4150mm	AL12-GLS1-RW-4150	Raw 4150mm

LED profile GLS1 cover



Cover PVC milky		Cover PVC transparent		Cover PC frost professional		Cover PC milky professional		Cover PC transparent professional	
1000 mm	AL12-COV-ML-PVC-1000	1000 mm	AL12-COV-TR-PVC-1000	1000 mm	AL12-COV-FR-PC-1000	1000 mm	AL12-COV-ML-PC-1000	1000 mm	AL12-COV-TR-PC-1000
2020 mm	AL12-COV-ML-PVC-2020	2020 mm	AL12-COV-TR-PVC-2020	2020 mm	AL12-COV-FR-PC-2020	2020 mm	AL12-COV-ML-PC-2020	2020 mm	AL12-COV-TR-PC-2020
3000 mm	AL12-COV-ML-PVC-3000	3000 mm	AL12-COV-TR-PVC-3000	3000 mm	AL12-COV-FR-PC-3000	3000 mm	AL12-COV-ML-PC-3000	3000 mm	AL12-COV-TR-PC-3000
4150 mm	AL12-COV-ML-PVC-4150	4150 mm	AL12-COV-TR-PVC-4150	4150 mm	AL12-COV-FR-PC-4150	4150 mm	AL12-COV-ML-PC-4150	4150 mm	AL12-COV-TR-PC-4150

LED GLS1 accessories



AL12-GLS1-AB-EC

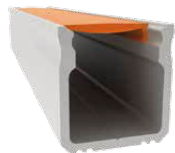
AL12-GLS1-AS-EC

AL12-GLS1-LW-EC

AL12-GLS1-AB-EC-O

AL12-GLS1-AS-EC-O

AL12-GLS1-LW-EC-O



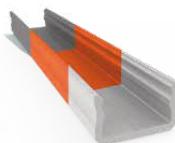
Easy cover assembly

Thanks to the use of a semi-circular cover slot, the installation is trouble-free, and disassembly does not damage the cover.



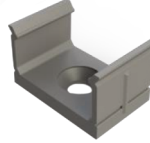
Heat dissipation

The ribbed base provides much more efficient heat dissipation than in traditional profiles.



Paint

In addition to anodized profiles (silver, inox stainless steel, black), in the case of wholesale orders, it is possible to order powder coated profiles in any color from the RAL palette.



Moutage brackets

The holder is an ideal solution for mounting LED profiles in kitchen cabinets, shelves, etc. Provides strong and stable fixing of the profile to the ground.